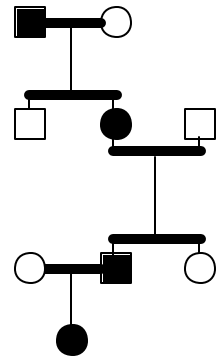


# IVth HHT Scientific Conference

## Tenerife, Canary Islands, April 2001



### **DOES THE NUMBER AND/OR DISTRIBUTION OF ARTERIOVENOUS MALFORMATIONS CHANGE WITH AGE IN PATIENTS WITH HEREDITARY HEMORRHAGIC TELANGIECTASIA?**

**DD Proctor, J Price, KJ Henderson, RI White**

*Departments of Internal Medicine and Diagnostic Radiology, Yale University School of Medicine, New Haven, Connecticut, USA, and University of North Carolina, Wilmington, North Carolina, USA.*

**Background:** Approximately 25-30% of patients with Hereditary Hemorrhagic Telangiectasia (HHT) will have gastrointestinal (GI) bleeding from telangiectases and this is more common in patients over 50 years.

**Objectives:** The objective of this study was to compare the number and distribution of telangiectases in the GI tract with the age of the patient.

**Methods:** A retrospective chart review of 30 patients that were referred to the Yale University HHT Center with GI bleeding was done. All patients met the Curacao Criteria for HHT. 21/29 esophagogastroduodenoscopies and 17/28 colonoscopies were performed at Yale. The remaining procedures were performed elsewhere, but the procedure reports were available for review.

#### **Results:**

##### Gastrointestinal Telangiectases

AGE	N	ESOPHAGUS	STOMACH	DUODENUM	N	COLON
≤50	10	None=10	None=2 Few=5 Several=3 Multiple=0	None=3 Few=4 Several=0 Multiple=3	10	None=6 Few=4 Several=0 Multiple=0
>50	19	None=18 Few=1	None=2 Few=4 Several=8 Multiple=5	None=1 Few=9 Several=6 Multiple=3	18	None=10 Few=4 Several=2 Multiple=2

KEY: None = no telangiectases seen; Few = 1-3 telangiectases seen; Several = 4-7 telangiectases seen; Multiple = >7 telangiectases seen.

**Structured Scientific Programme:** Friday 20th - Monday 23<sup>rd</sup> April 2001

**Informal Collaborative Workshops:** Tuesday 24th - Thursday 26<sup>th</sup> April 2001

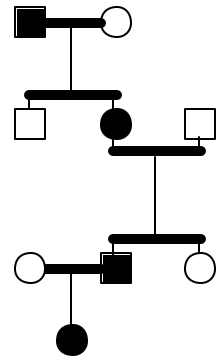
**Conference Venue:** Hotel Semiramis, Puerto de la Cruz, Canary Islands

Clinical /combined Committee: Henri Plauchu, Kees Westermann, Poul Vase, Bob White and Claire Shovlin.

Scientific Committee: Michelle Letarte and Carmelo Bernabeu.

# IVth HHT Scientific Conference

Tenerife, Canary Islands, April 2001



**Conclusions:** Very few patients (3%) with HHT, regardless of age, have esophageal telangiectases ( $t = -.59, p > .05$ ). Gastric (89%) and duodenal (95%) telangiectases are common in patients > 50 years ( $\chi^2 = 6.15$  and  $9.79$ , respectively,  $df = 3, p < .05$ ). Patients > 50 years are more likely to have several or multiple gastric or duodenal telangiectases than patients younger than 50 (30% vs. 68% and 30% vs. 47%, respectively). For patients of all ages, colonic telangiectases are less common (43%) than gastric or duodenal telangiectases.

---

**Structured Scientific Programme:** Friday 20th - Monday 23<sup>rd</sup> April 2001

**Informal Collaborative Workshops:** Tuesday 24th - Thursday 26<sup>th</sup> April 2001

**Conference Venue:** Hotel Semiramis, Puerto de la Cruz, Canary Islands

Clinical /combined Committee: Henri Plauchu, Kees Westermann, Poul Vase, Bob White and Claire Shovlin.

Scientific Committee: Michelle Letarte and Carmelo Bernabeu.