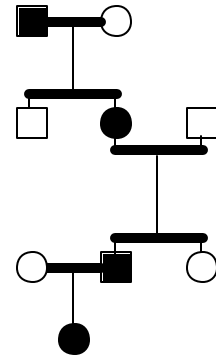


IVth HHT Scientific Conference

Tenerife, Canary Islands, April 2001



MUSCULOSKELETAL AND LIVER INFECTIONS ASSOCIATED WITH PULMONARY ARTERIOVENOUS MALFORMATIONS

KJ Henderson, S Saluja, B Byrd, RI White Jr

Department of Diagnostic Radiology, Yale University School of Medicine, New Haven, CT USA

Background: While brain abscess has been recognized as a complication of pulmonary arteriovenous malformations (PAVM), spontaneous bacterial infections of the musculoskeletal system and liver have not previously been attributed to PAVM.

Objective: To report spontaneous musculoskeletal and liver infections in patients with PAVM.

Methods: 278 patients were admitted for PAVM closure between July 1996 and March 2001. Records of those with a history of brain abscess, osteomyelitis, diskitis, and liver abscess were reviewed.

Results: 13/278 (4.7 %) patients had a prior musculoskeletal or liver infection and 30/278 (10.8 %) patients had a history of brain abscess. The mean arterial blood oxygen (PaO₂) at the time of PAVM repair in patients with these infections was lower than in patients without a prior history of infection (61.9 mmHg versus 74 mmHg).

Extracerebral Infections in 278 Patients with PAVM

N	Site	Bacteria	Delay in PAVM Rx
7	disk, paraspinal	staph aureus	9.8 Years
3	osteomyelitis	streptococcus, staph epidermidis, bacteroides, citrobacter diversus	5 Years
3	liver	not available	3 Year

Conclusions: Infections of the musculoskeletal system and/or liver are a significant source of morbidity for the individual with untreated PAVM. PaO₂ is significantly lower in those with infections, suggesting that patients with the largest percentage shunt are at greater risk. There was a long delay between the infection and referral for PAVM treatment.

Structured Scientific Programme: Friday 20th - Monday 23rd April 2001

Informal Collaborative Workshops: Tuesday 24th - Thursday 26th April 2001

Conference Venue: Hotel Semiramis Puerto de la Cruz, Canary Islands

Conference Chairman: Claire Shovlin

Scientific sub-committee: Michelle Letarte and Carmelo Bernabeu.

Clinical sub-committee: Bob White, Kees Westermann, Henri Plauchu, and Poul Vase